



Violence against the Person

Presentation to Safer Stockton Partnership

Chief Superintendent Gordon Lang

Violence Against The Person Crime Classification

- Violence with Injury
 - Any violence resulting in injury from Actual Bodily Harm to Murder.
- Violence without Injury
 - Assaults where no injury is caused
 - Assaults on police
 - Cruelty, neglect of children, abandonment
 - Threats, Endangerment, Harrassment

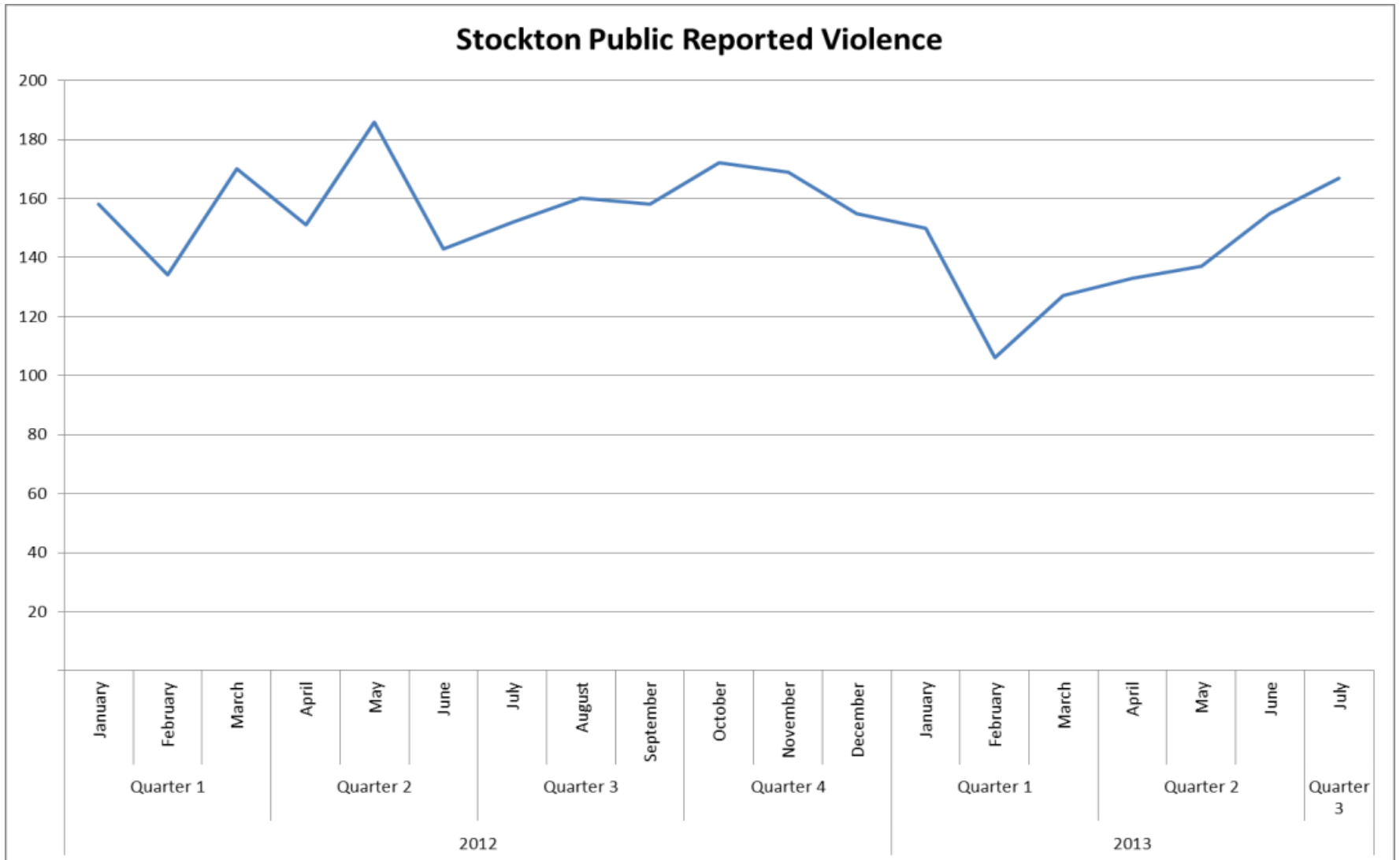
Stockton Financial YTD Performance

To end of July

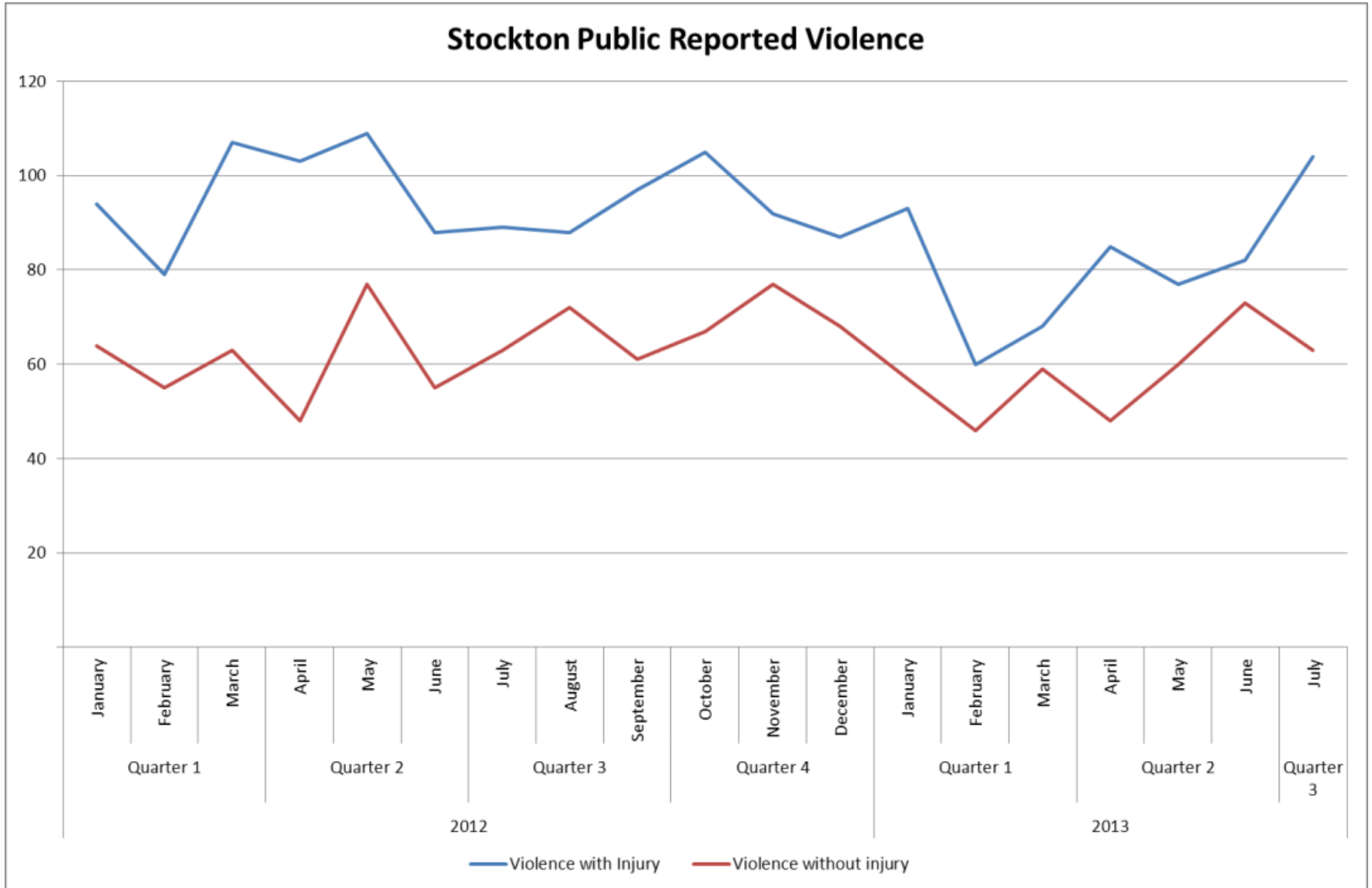
	April - End July		
	2013-2014	2012-2013	Diff
Violence with Injury			
2 - Attempted Murder	1	0	1
4/4 - Causing Death or Serious Injury by Dangerous Driving	1	0	1
5D - Assault with Intent to cause Serious Harm	9	18	-9
8N - Assault with Injury	334	371	-37
8P - Racially or Religiously Aggravated Assault with Injury	3	0	3
Violence with Injury Total	348	389	-41
Violence without injury			
104 - Assault Without Injury on a Constable	20	16	4
105A - Assault Without Injury	187	184	3
105B - Racially or Religiously Aggravated Assault Without Injury	3	7	-4
11A - Cruelty to Children/Young Persons	18	7	11
3B - Threats To Kill	0	5	-5
5E - Endangering Life	1	0	1
8L - Harassment	14	23	-9
36 - Kidnapping	1	1	0
Violence without injury Total	244	243	1
Grand Total	592	632	-40

Violence Trends

Stockton Public Reported Violence



Violence Trends



Distribution of Violence

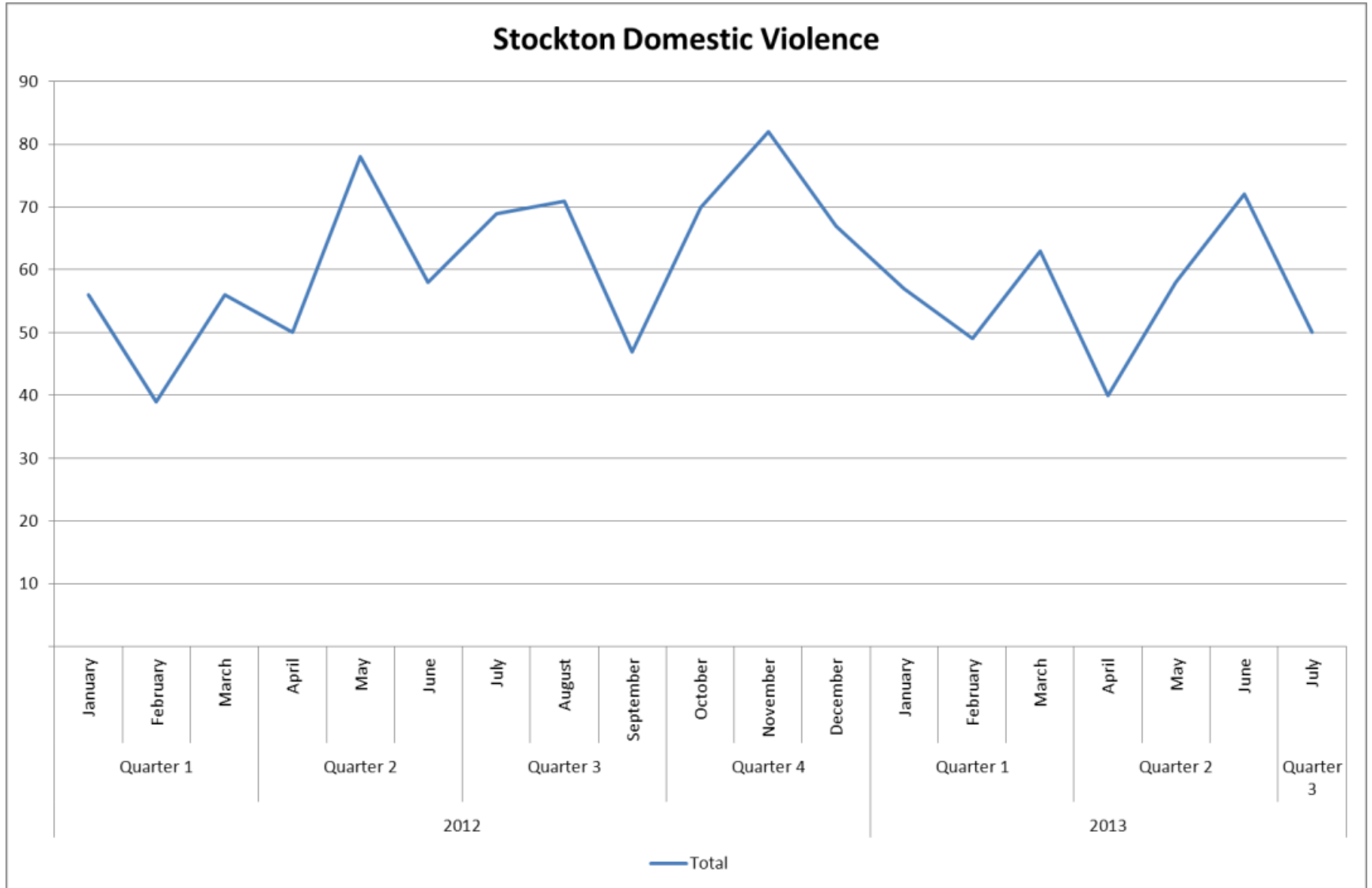
August 2012 – End July 2013

Crime Ward	Violence with Injury	Violence without injury	Grand Total
STOCKTON_TOWN_CENTRE (S)	244	136	380
MANDALE_AND_VICTORIA (S)	92	79	171
NEWTOWN (S)	86	50	136
PARKFIELD_AND_OXBRIDGE (S)	84	45	129
HARDWICK (S)	63	53	116
BILLINGHAM_EAST (S)	53	30	83
NORTON_NORTH (S)	52	27	79
BILLINGHAM_SOUTH (S)	39	32	71
BILLINGHAM_CENTRAL (S)	28	39	67
NORTON_SOUTH (S)	36	30	66
ROSEWORTH (S)	33	30	63
STAINSBY_HILL (S)	31	26	57
YARM (S)	34	16	50
VILLAGE (S)	22	23	45
BISHOPSGARTH_AND_ELM_TREE (S)	16	18	34
EAGLESCLIFFE (S)	17	17	34
GRANGEFIELD (S)	10	19	29
INGLEBY_BARWICK_EAST (S)	13	14	27
BILLINGHAM_NORTH (S)	15	9	24
BILLINGHAM_WEST (S)	14	10	24
NORTHERN_PARISHES (S)	10	9	19
INGLEBY_BARWICK_WEST (S)	12	7	19
FAIRFIELD (S)	8	9	17
UNKNOWN (S)	12	5	17
NORTON_WEST (S)	7	5	12
HARTBURN (S)	3	8	11
WESTERN_PARISHES (S)	3	4	7
AYRESOME (S)	1	1	2
Grand Total	1,038	751	1,789

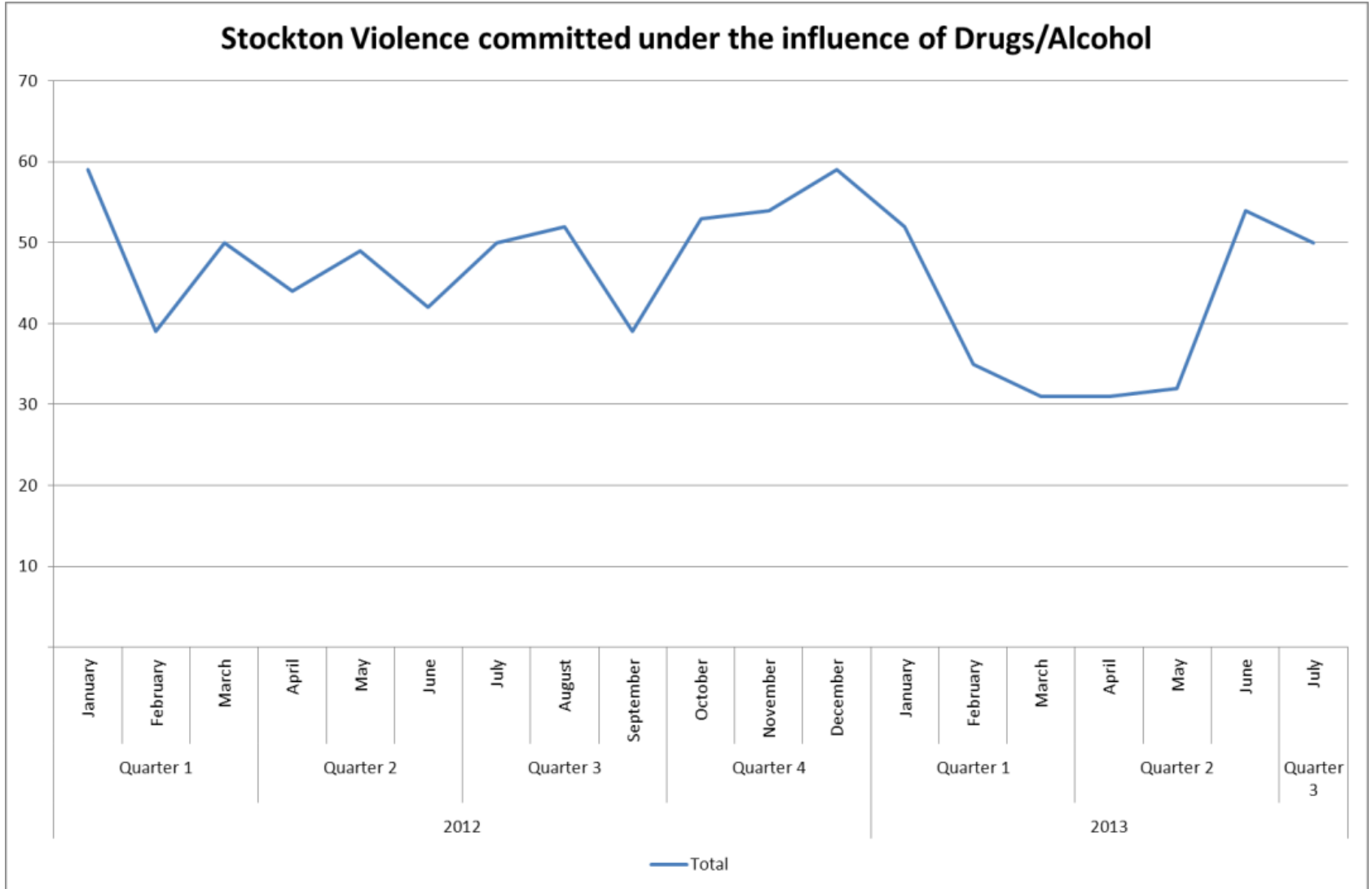
Ward Performance Financial YTD

Crime Ward	2013-14	2012-13	Diff
AYRESOME (S)	1	2	-1
BILLINGHAM_CENTRAL (S)	25	35	-10
BILLINGHAM_EAST (S)	38	36	2
BILLINGHAM_NORTH (S)	13	3	10
BILLINGHAM_SOUTH (S)	29	19	10
BILLINGHAM_WEST (S)	5	8	-3
BISHOPSGARTH_AND_ELM_TREE (S)	10	16	-6
EAGLESCLIFFE (S)	13	7	6
FAIRFIELD (S)	6	8	-2
GRANGFIELD (S)	11	10	1
HARDWICK (S)	53	34	19
HARTBURN (S)	3	4	-1
INGLEBY_BARWICK_EAST (S)	13	10	3
INGLEBY_BARWICK_WEST (S)	8	12	-4
MANDALE_AND_VICTORIA (S)	51	67	-16
NEWTOWN (S)	51	58	-7
NORTHERN_PARISHES (S)	3	5	-2
NORTON_NORTH (S)	20	28	-8
NORTON_SOUTH (S)	15	17	-2
NORTON_WEST (S)	4	2	2
PARKFIELD_AND_OXBRIDGE (S)	32	48	-16
ROSEWORTH (S)	21	15	6
STAINSBY_HILL (S)	18	30	-12
STOCKTON_TOWN_CENTRE (S)	111	117	-6
UNKNOWN (S)	11		11
VILLAGE (S)	12	18	-6
WESTERN_PARISHES (S)	1	5	-4
YARM (S)	14	18	-4
Grand Total	592	632	-40

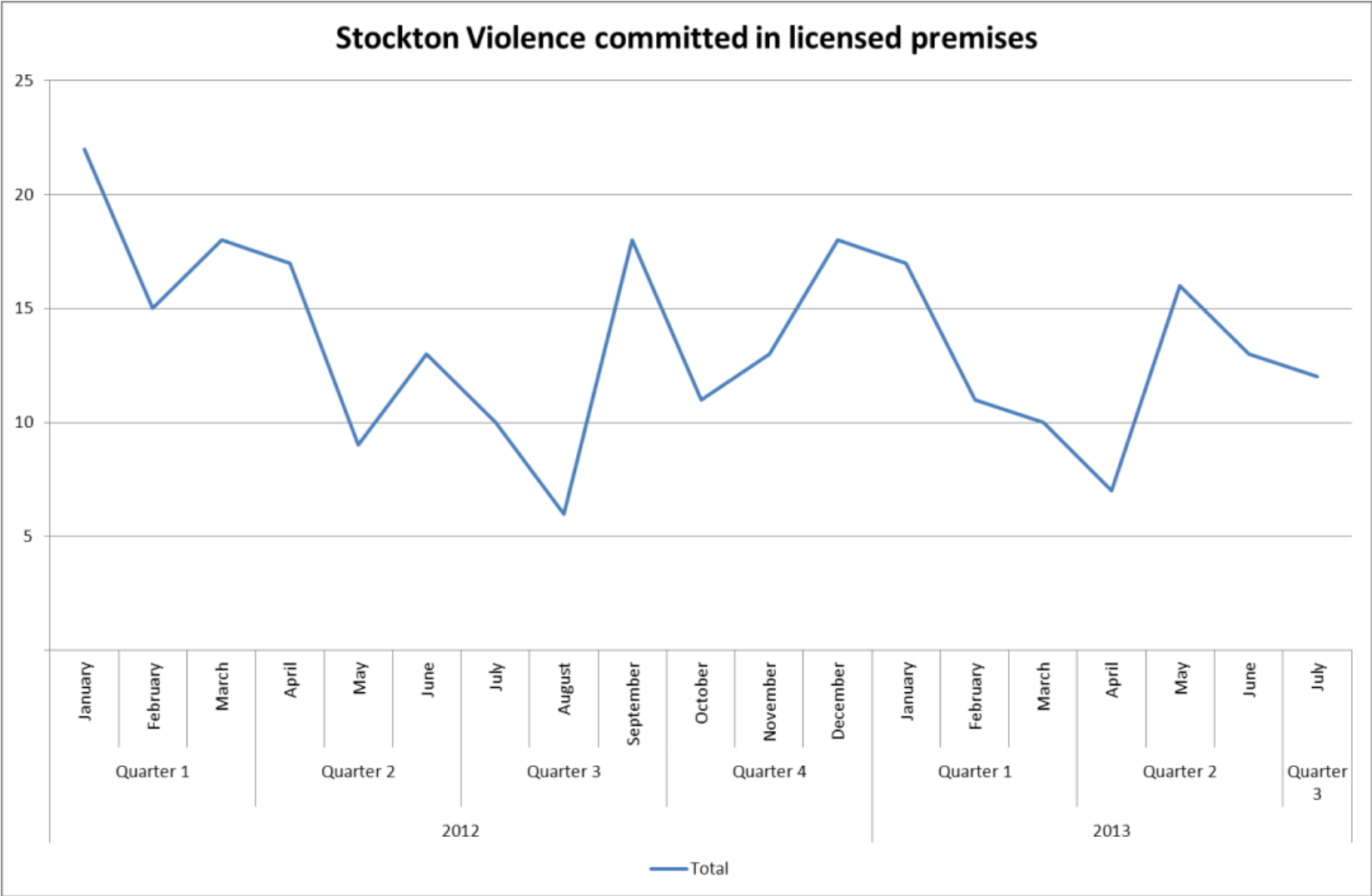
Domestic Violence



Drugs and Alcohol

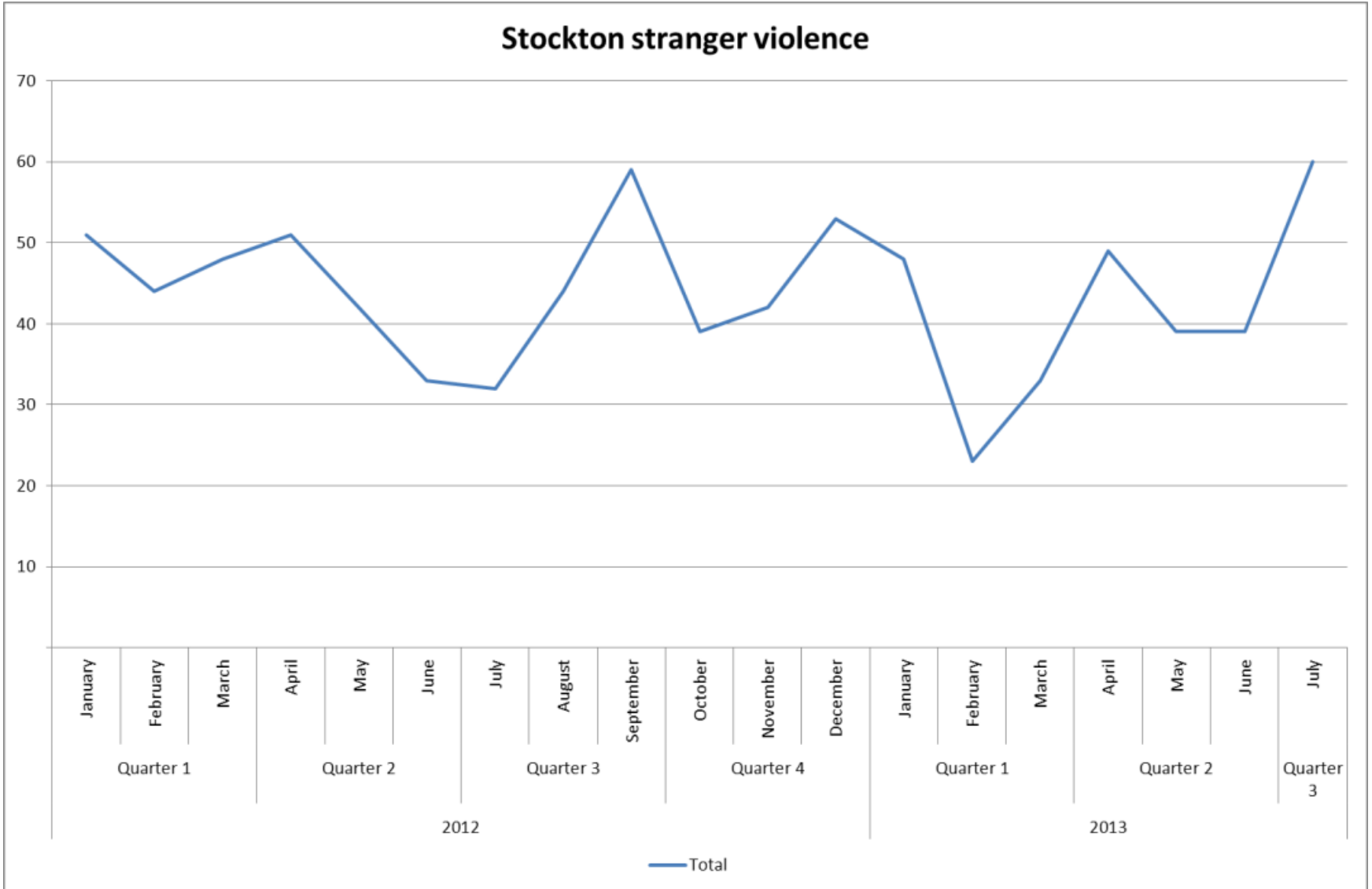


Licensed Premises



Stranger Violence

Stockton stranger violence



Racially Motivated Violence

Stockton racially motivated violence

